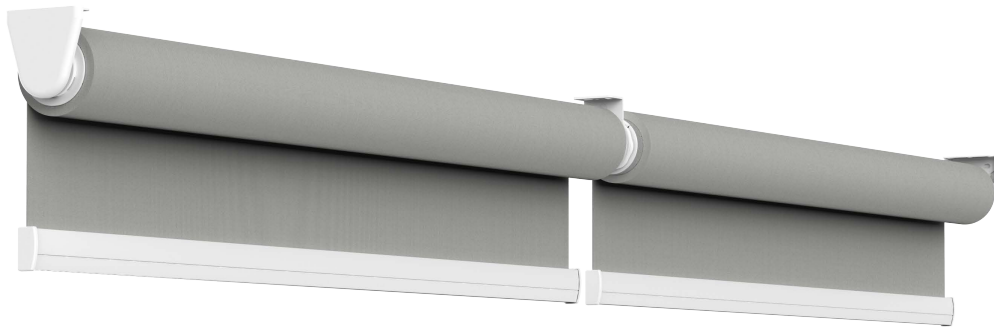
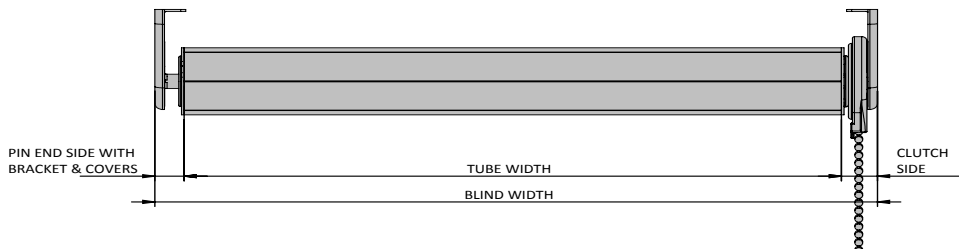


ROLLEASE ACMEDA CONTRACT PROGRAM

Skyline System Deduction Chart - Open Roll



SKYLINE DEDUCTIONS

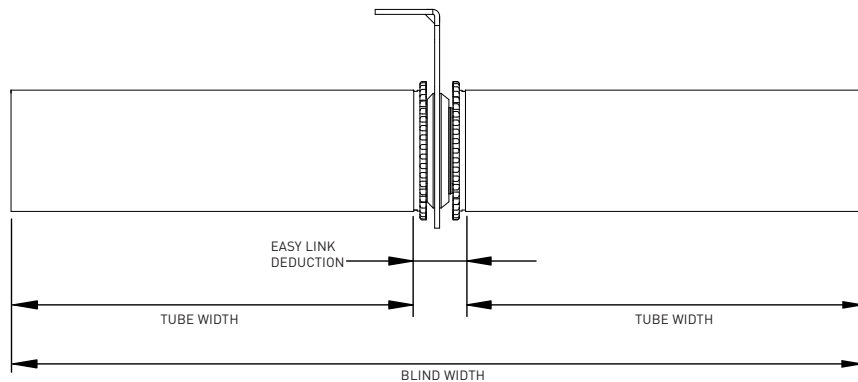


	PIN ENDS			PER COVER	PER BRACKET		ADAPTERS		
	CLUTCH SIDE	PIN END SIDE	HD PIN END	BRACKET COVER	SLB6xxxx	SLNB6xxxx	SLA4xxx	RA25xx	Other*
SL5/SL20	.45" [12mm]	.30" [8mm]	.33" [9mm]	.7" [2mm]	.19" [5mm]	.18" [5mm]	.06" [2mm]	.03" [1mm]	.00" [0mm]
SL10/SL15	.38" [10mm]	.30" [8mm]	.33" [9mm]	.7" [2mm]	.19" [5mm]	.18" [5mm]	.06" [2mm]	.03" [1mm]	.00" [0mm]
SL30	.50" [13mm]	.30" [8mm]	.33" [9mm]	.7" [2mm]	.19" [5mm]	.18" [5mm]	.06" [2mm]	.03" [1mm]	.00" [0mm]
G200	.56" [15mm]	.30" [8mm]	.33" [9mm]	.7" [2mm]	.19" [5mm]	.18" [5mm]	.06" [2mm]	.03" [1mm]	.00" [0mm]
G400	.50" [13mm]	.30" [8mm]	.33" [9mm]	.7" [2mm]	.19" [5mm]	.18" [5mm]	.06" [2mm]	.03" [1mm]	.00" [0mm]

These deductions allow an easy and quick installation (instal the pin end first, then the clutch side)

All other adapters require no further deductions

EASYLINK DEDUCTIONS



	EASY-LINK	SKYLINE EASY-LINK	PIN TO PIN
EASY-LINK DEDUCTION	17mm (0.67")	19mm (0.75")	14mm (0.55")*

* The shades need to be removed by unlocking the bracket bearing disk. If the easy unhooking method to release the shades is needed, add 6mm deduction per wanted side.

ROLLEASE ACMEDA CONTRACT

Leading innovator of precision hardware and automated shade solutions.

USA | EUROPE | AUSTRALIA rolleaseacmeda.com