

FASHION WAND® CONNECT

Part #: RB91-1403-xxx020







Easily upgrade existing unsafe shades in the home with the convenient Fashion Wand® Connect. It is adaptable to any existing Rollease Acmeda clutch and attractively provides a child safe control for our most popular shades.

FEATURES

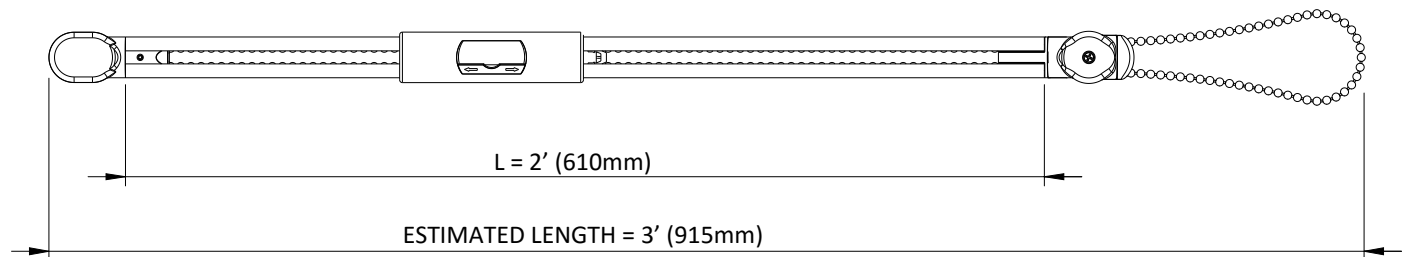
- Child safe solution, with no loose hanging chains.
- Easy to use, quick release toggle operation.
- Quick to install, under 5 minute changeover time using no tools.
- Aesthetically pleasing sleek wand device, encasing chain from view and touch.
- Available in a convenient 2 foot length to suit popular medium shades.
- Independently tested and approved by WCMA/ANSI safety standards.
- No additional wall mounted chain tension devices required.
- Patented quick release handle triggers the clutch to lift or lower the shade, and an internal pulley system ensures chain is taut at all times.
- High quality UV stable materials, guaranteed to not discolor, bow or break.
- Optional cradle to hide Fashion Wand® under a fascia system for the ultimate invisible solution.
- Lifetime Warranty.
- An all-inclusive Fashion Wand® with Rollease Acmeda clutch coming early 2017.



COLORS

					
White 079	Black 058	Gray 331	Bronze 089	Vanilla 414	Clear 001

DIMENSIONS



Leading innovator of precision hardware and automated shade solutions.
USA | AUSTRALIA | EUROPE rolleaseacmeda.com

v1.0 | © 2016 Rollease Acmeda Group

 **ROLLEASE
ACMEDA**
PRECISION IN MOTION

FASHION WAND® CONNECT

SPECIFICATIONS

Max Lift Weight	Over 40.0lbs (18kg) based on G400 capacity
Max Shade Height	Over 10' (3m)
Child Safety Standards	WCMA A100.1-2012 Compliant
Chain	50-51 BPF Plastic Loop
Chain Length	3' for standard 2' wand*

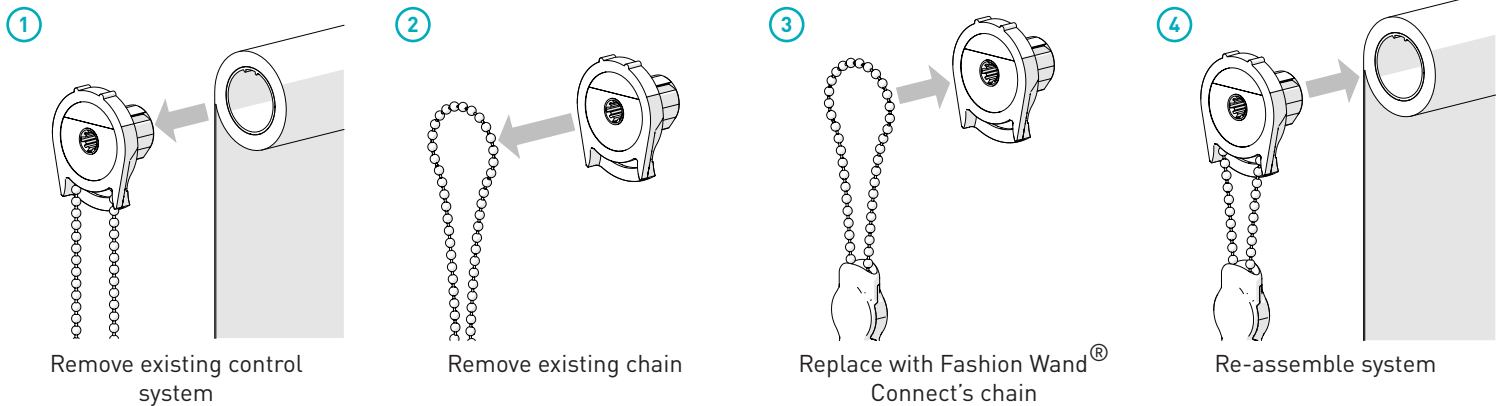
*Additional lengths available upon request.

COMPATIBLE SYSTEMS

Rollease Acmeda Clutches:

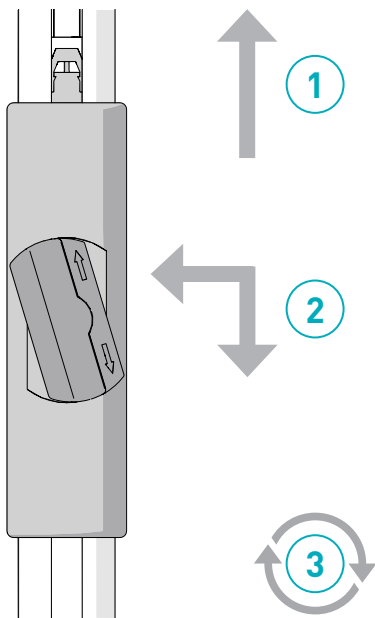
- R-Series: R3, R8, R16, R24
- Skyline: SL5, SL10, SL15, SL20, SL30
- Galaxy: G200, G400
- RB09 Chain Control
- SS38 Roman Shade
- Workroom CSCL

INSTALLATION

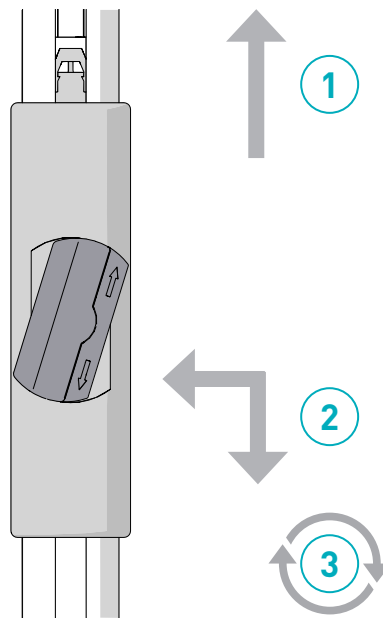


OPERATION (Right hand control with standard roll shown)

TO LOWER SHADE:



TO RAISE SHADE:



Leading innovator of precision hardware and automated shade solutions.

USA | AUSTRALIA | EUROPE rolleaseacmeda.com

v1.0 | © 2016 Rollease Acmeda Group