

**SYSTEM NAME**

The R-Series system is the original clutch system product line developed by Rollease Acmeda. Over the course of 30 years, the R-Series maintains it's popularity because of its reliability and easy of fabrication.

**AESTHETIC FEATURES**

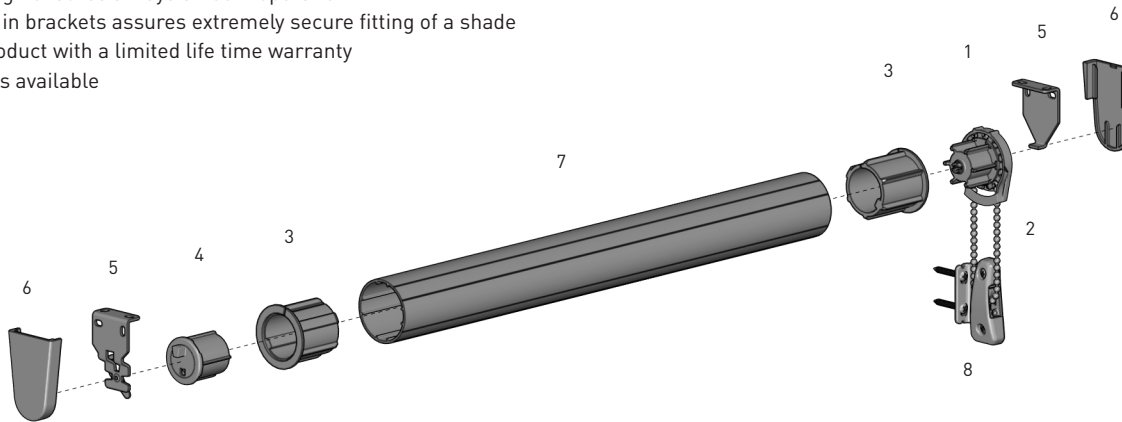
- Minimal light gaps

**ASSEMBLY / PRODUCTION FEATURES**

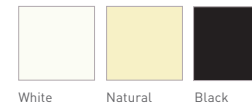
- Made with optimum tolerances to ensure high quality
- Fiberglass reinforced materials ensures long working life
- Possible to use with a wide range of tube sizes
- Ideal for commercial applications

**FUNCTIONAL BENEFITS**

- Multispring design ensures always smooth operation
- Locking feature in brackets assures extremely secure fitting of a shade
- Long-lasting product with a limited life time warranty
- Exterior versions available



**COLOR RANGE**



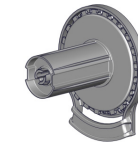
**SYSTEM INDEX**

1	R-Series Clutch R##C##xx RGAL###xx
2	Chain RBC45Mxx - Metal RBC6MMxx - Plastic
3	Adapter RA2#xx
4	R-Series End Plug REP##xxx
5	R-Series Bracket RB###xx RBGALxx
6	R-Series Bracket Cover RBPC###xx
7	Aluminium Tube RTE#T##
8	Tension / Hold Down Devices RE0051203 RB91-1336-xxx000 + RB91-1337-xxx000

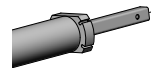
# - Size  
xxx- Color

**PRODUCT OPTIONS**

**GALAXY CLUTCH**



**SPRING ASSIST**

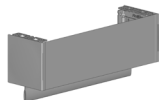


**SYSTEM UPGRADES**

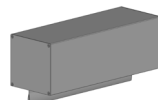
**CASSETTE**  
80/100/120



**FASCIA 3"/4"/5"**



**POCKETS**  
3"/4"/5"/6"



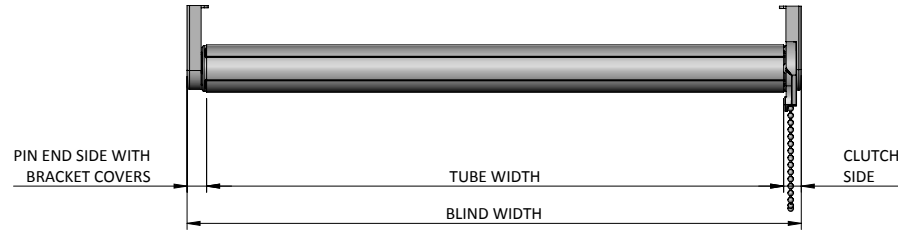
**OTHER CONTROL OPTIONS**

**MOTORIZED**



**SPECIFICATIONS**

**DEDUCTION TABLE**



CLUTCH	CLUTCH SIDE	PIN END	RB360/ RB380		RB360/ RB380/ RB390		RB560		RB580/ RB590		RBGAL		ADAPTERS	
			BRACKET COVER	CLUTCH SIDE	PIN END	CLUTCH SIDE	PIN END	CLUTCH SIDE	PIN END	CLUTCH SIDE	PIN END	CLUTCH SIDE	PIN END	RA2xx
R3/R8	0.44" [12mm]	0.16" [5mm]	0.16" [5mm]	0.08" [3mm]	0.44" [12mm]	-	-	-	-	-	-	-	-	-
R16	0.53" [14mm]	0.16" [5mm]	-	-	-	0.08" [3mm]	0.44" [12mm]	0.08" [3mm]	0.43" [11mm]	0.13" [4mm]	0.46" [12mm]	0" [0mm]	-	
R24	0.52" [14mm]	0.16" [5mm]	-	-	-	-	-	0.08" [3mm]	0.43" [11mm]	0.13" [4mm]	0.46" [12mm]	0" [0mm]	-	
RGAL	0.56" [15mm]	0.16" [5mm]	-	-	-	0.08" [3mm]	0.44" [12mm]	0.08" [3mm]	0.43" [11mm]	0.13" [4mm]	0.46" [12mm]	0" [0mm]	0.03" [1mm]	
RGAL400	0.5" [13mm]	0.16" [5mm]	-	-	-	-	-	0.08" [3mm]	0.43" [11mm]	0.13" [4mm]	0.46" [12mm]	0" [0mm]	0.03" [1mm]	

**MAX HOLD CAPACITY**

CLUTCH	LOAD	TUBE	CORD or BEAD CHAIN
R3	3.4 Lbs (1.5kg)	1" [25mm]	Both
R3	3 Lbs (1.4kg)	1-1/8" [28mm]	Both
R8	8 Lbs (3.6kg)	1-1/8" [28mm]	Both
R8	7.2 Lbs (3.3kg)	1-1/4" [32mm]	Both
R8	6 Lbs (2.7kg)	1-1/2" [38mm]	Both
R16	16 Lbs (7.3kg)	1-1/2" [38mm]	Bead
R16	12 Lbs (5.5kg)	2" [50mm]	Bead
R24	24 Lbs (10.9kg)	1-1/2" [38mm]	Bead
R24	18 Lbs (8.2kg)	2" [50mm]	Bead
G200	24 Lbs (10.9kg)	1-1/2" [38mm]	Bead
G200	18 Lbs (8.2kg)	2" [50mm]	Bead
G200	14.4 Lbs (6.5kg)	2-1/2" [63mm]	Bead
G400	40 Lbs (18.2kg)	2" [50mm]	Bead
G400	32 Lbs (14.5kg)	2-1/2" [63mm]	Bead
G400	25 Lbs (11.4kg)	3-1/4" [83mm]	Bead

Please note that the loads are max loads for clutches. Max loads will not produce comfortable pull forces.

**TUBE ADAPTER COMPATIBILITY CHART**

CLUTCH/ TUBE	1" [25mm]	1-1/8" [28mm]	1-1/4" [32mm]	1-1/2" [38mm]	2" [50mm]	2-1/2" [63mm]	3-1/4" [83mm]
R3	Compatible	Compatible	-	-	-	-	-
R8	Compatible	Compatible	Compatible	Compatible	-	-	-
R16	-	-	-	Compatible	RA2	-	-
R24	-	-	-	Compatible	RA2	-	-
G200	-	-	-	Compatible	RA2	RA25	-
G400	-	-	-	Compatible	RA2	RA25	RA25

**MAX ROLL**

BRACKET	MAX ROLL SIZE	R3-R8	R16	R24	G200	G400
RB360	2.75" [69mm]	Compatible	-	-	-	-
RB380	3.65" [92mm]	Compatible	-	-	-	-
RB390	4" [101mm]	Compatible	-	-	-	-
RB560	3" [76mm]	-	Compatible	-	Compatible	-
RB580	4" [101mm]	-	Compatible	Compatible	Compatible	Compatible
RB590	5.5" [139mm]	-	Compatible	Compatible	Compatible	Compatible
RBGAL	4" [101mm]	-	Compatible	Compatible	Compatible	Compatible

