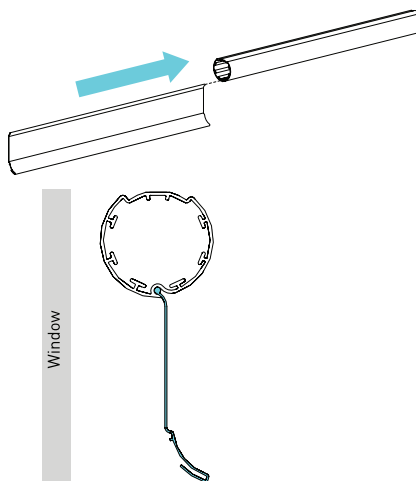
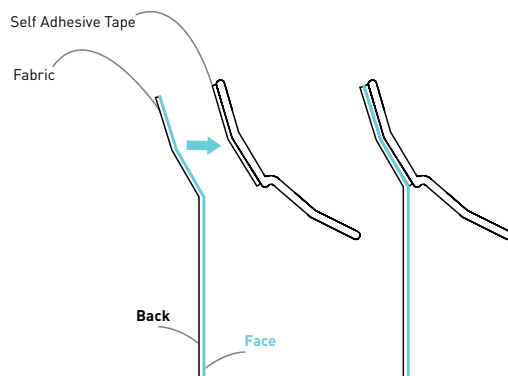


STANDARD ROLL

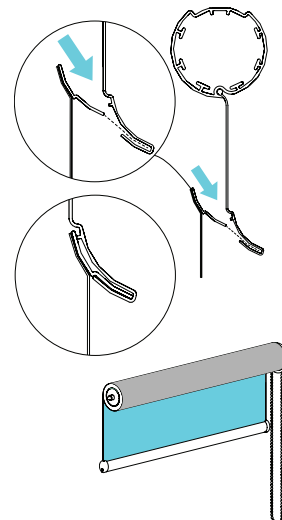
1 Attach the Flexible Tube Hook to the Tube



2 Attach the stiff hook as shown to the face of the fabric

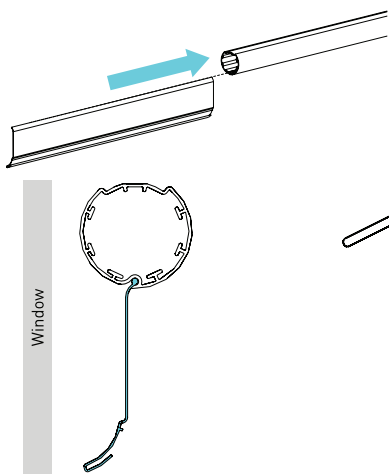


3 Attach Fabric Hook to the Flexible Tube Hook

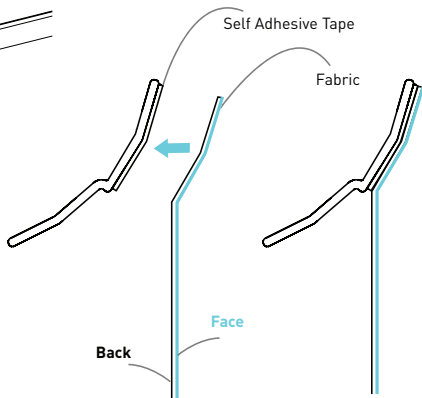


REVERSE ROLL

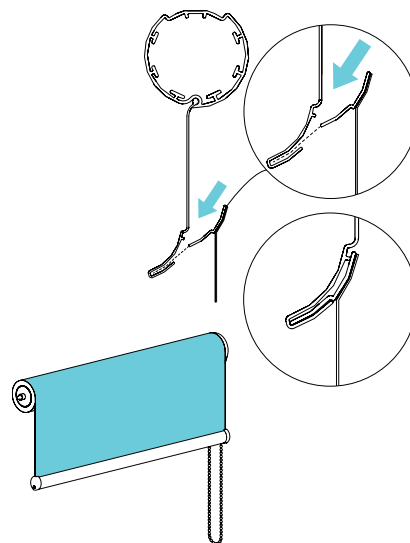
1 Attach the Flexible Tube Hook to the Tube



2 Attach the stiff hook as shown to the back of the fabric



3 Attach Fabric Hook to the Flexible Tube Hook



COMPATIBLE SYSTEMS

SKYLINE	CLUTCH	SL15H01	SL20H53	SL30H53	RGALH	RGAL400	
	ADAPTER	SLA53			-		
	PIN END	SLPEHD53xx			SLPE653xx		
R SERIES	CLUTCH	R16C53	R24C53	RGALxx	RGAL400xx	SA24L36xx	SA24L45xx
	PIN END			REP53			
EASY SPRING PLUS							
EASY SPRING ULTRA							
EASY SPRING WAND							
AUTOMATE	MOTOR	AUTOMATE Li-ion [25mm/1.1Nm/40r] ARC-MTR012V	AUTOMATE Li-ion [28mm/2.0Nm/28r] ARC-MTR012V	AUTOMATE Li-ion [25mm/1.1Nm/40r] WND-MTR012V	AUTOMATE DC [25mm/1.1Nm/40r] ARC-MTR012V	AUTOMATE DC [28mm/2.0Nm/28r] ARC-MTR012V	
	MOTOR (CODE)	MTDCBRF25-1.1	MTDCBRFQ28-2	MTDCBSW25-1.1	MTDCRF25-1.1	MTDCRFQ28-2	
	MOTOR CROWN	MTCR-25-1.5	MTCR-28-1.5	MTCR-25-1.5	MTCR-25-1.5	MTCR-25-1.5	MTCR-28-1.5

The Hook Tube System is patent protected under US Patent 9,683,407 and is manufactured and supplied in North America by Rollease Acmeda, Inc. under an exclusive license agreement with Bloc Blinds of Magherafelt, UK