

CONTRACT SERIES TWO

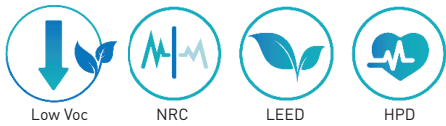
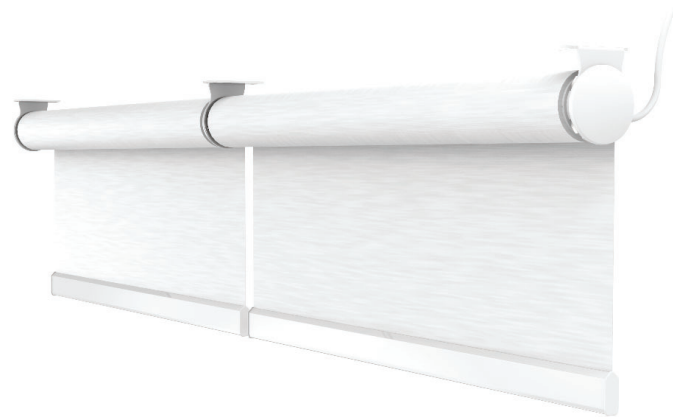
LARGE OPEN ROLL MOTOR SHADE

Wired AC



The Wire-Free S60 integrates our AC powered 120v tubular motor, in the heart of this robust, quiet roller shade system for large applications producing a powerful, modern motorized solution.

- Durable construction, modern design and Industrial aesthetic.
- Stylish single or multi-channel remote controls & smart phone compatibility.
- Compact and easily hidden in internal recesses.
- Dynamic light and heat control can aid in increasing energy efficiency.
- Levelling control; multiple shades finish in the same position for a premium aesthetic
- Single, linked, and angled link shade applications.
- Bracket features verticle adjustability.
- Max width of 18', max drop of 24' and capacity to cover areas up to 220sq ft.
- Can handle up to 20 nm motor torque.
- Tube spline fabric attachment available.



Match this solution with any of our sunscreen, blockout or high performance fabrics for a complete finished solution. See our document library for comprehensive information including HPD, LEED & NRC specifications.

WIRED MOTOR OPTIONS

Automate Pulse Hub
[Smart Phone Control]



Automate ARC Repeater
[Extends the ARC signal]



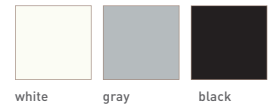
Automate Remotes
[Hand held or wall mounts]



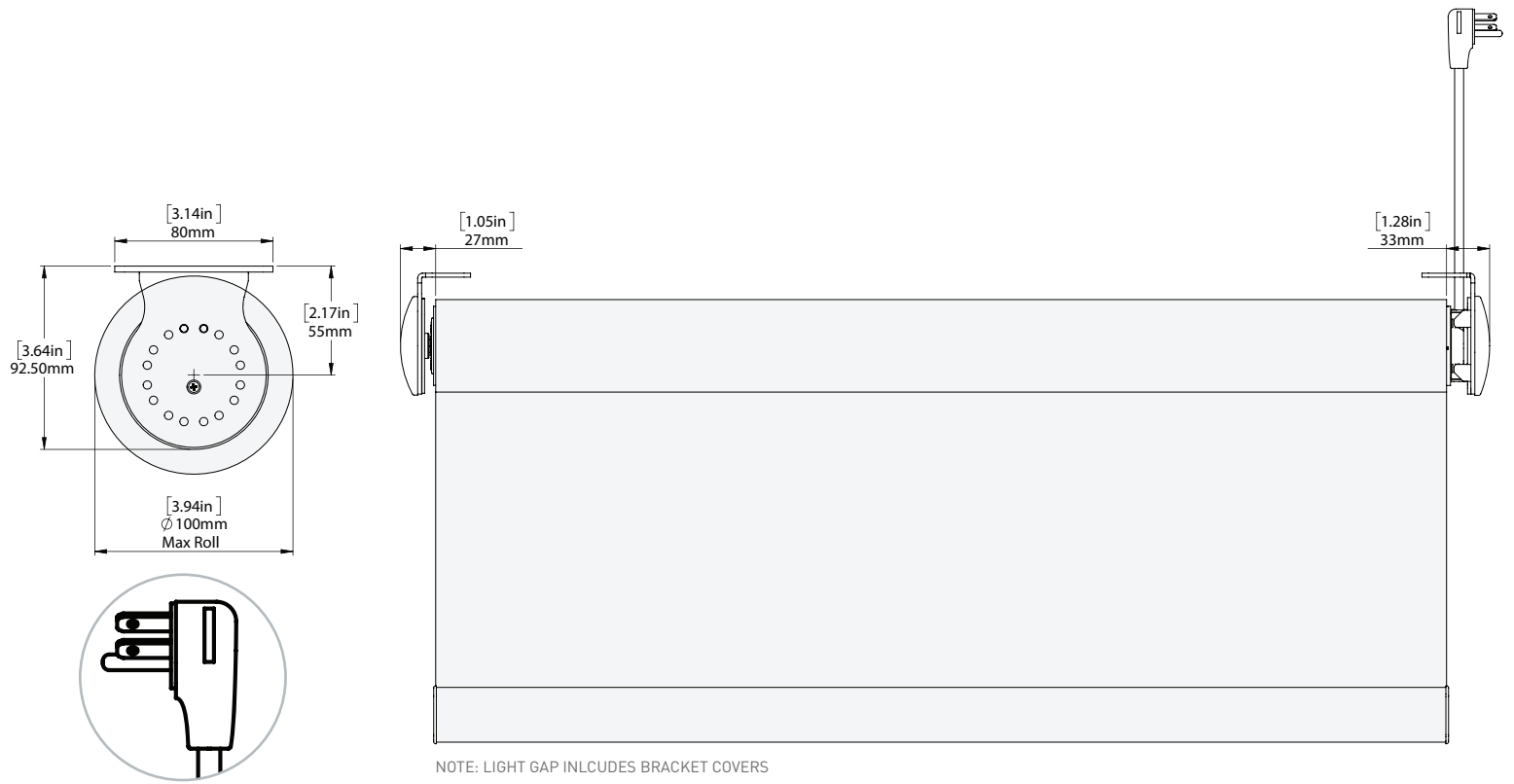
Automate Sun Sensor
[Detects sunlight to control shade]



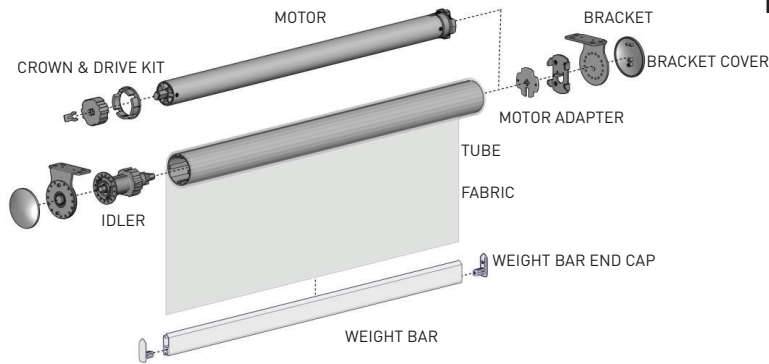
BRACKET COLOURS



FRONT & SIDE VIEW

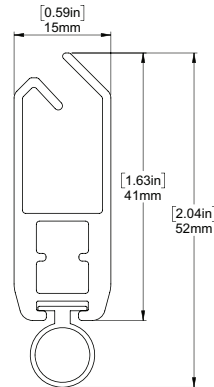


SCHEMATIC

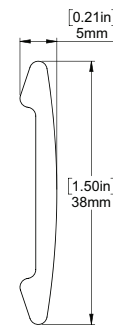


BOTTOM RAIL OPTIONS

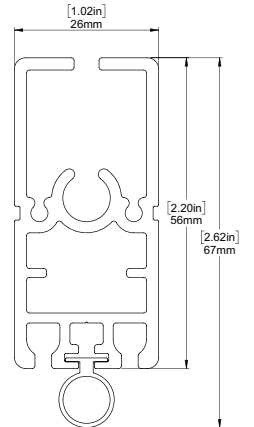
F4115 HEM BAR



INTERNAL HEM BAR



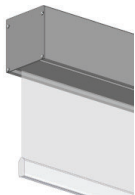
F56 HD HEM BAR



SYSTEM UPGRADES

Recess

[for improved light blackout]



Edge Side Channels

[for improved light blackout]



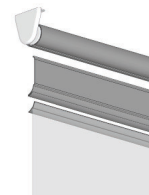
Internal Wire Guide

[supporting complex shading systems]



Fabric Switch System

[fast easy changing of fabric on a roller shade]



For more information about our Upgrade solutions, see our UPGRADE SPECIFICATION sheets.