

# CONTRACT SERIES ONE

## Medium Open Roller Shade

Wire Free / Low Voltage / Solar



Wire-free and battery operated, the motorized Contract Series One roller shade, enables simple motorization. Retaining a minimal aesthetic, the wire-free motor is hidden and can be constantly charged with a solar panel, providing the ultimate in energy efficiency, sustainability and privacy. Enable view through, privacy and comfort with the precision engineered Contract Series One roller shade.

- Precision engineered, durable construction and modern design.
- Enables view through and privacy with minimal light gaps
- Enhances sustainability and efficiency with complete light and thermal control.
- Integrated, ARC™ enabled, battery operated, motorization. Completely wire-free.
- Ultra-quiet operation.
- Stylish single or multi-channel remote controls & smart phone compatibility.
- Single & linked shade applications.
- Levelling control; multiple shades finish in the same position for a premium aesthetic
- Optional solar panel for energy efficient constant charging.
- Max width of 120" (based on 120" drop). Capacity to cover areas up to 100 sqf.



Low Voc



NRC

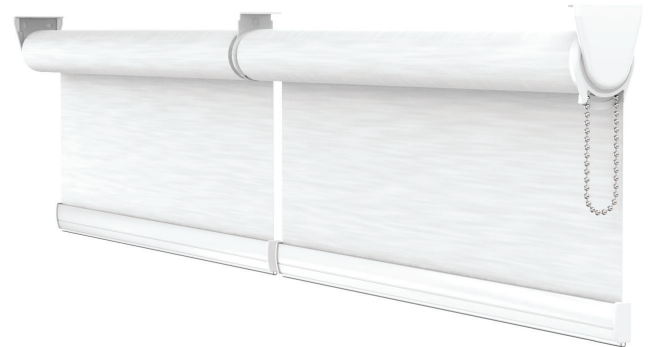


LEED



HPD

Match this solution with any of our sunscreen, blockout or high performance fabrics for a complete finished solution. See our document library for comprehensive information including HPD, LEED & NRC specifications.



### BRACKET COLOURS



white



vanilla



gray



bronze



black

### BATTERY MOTOR OPTIONS

**Automate Pulse Hub**  
[Smart Phone Control]



**Automate Solar Charger**  
[energy efficient]



**Automate ARC Repeater**  
[Extends the ARC signal]



**Automate Remotes**  
[Hand held or wall mounts]



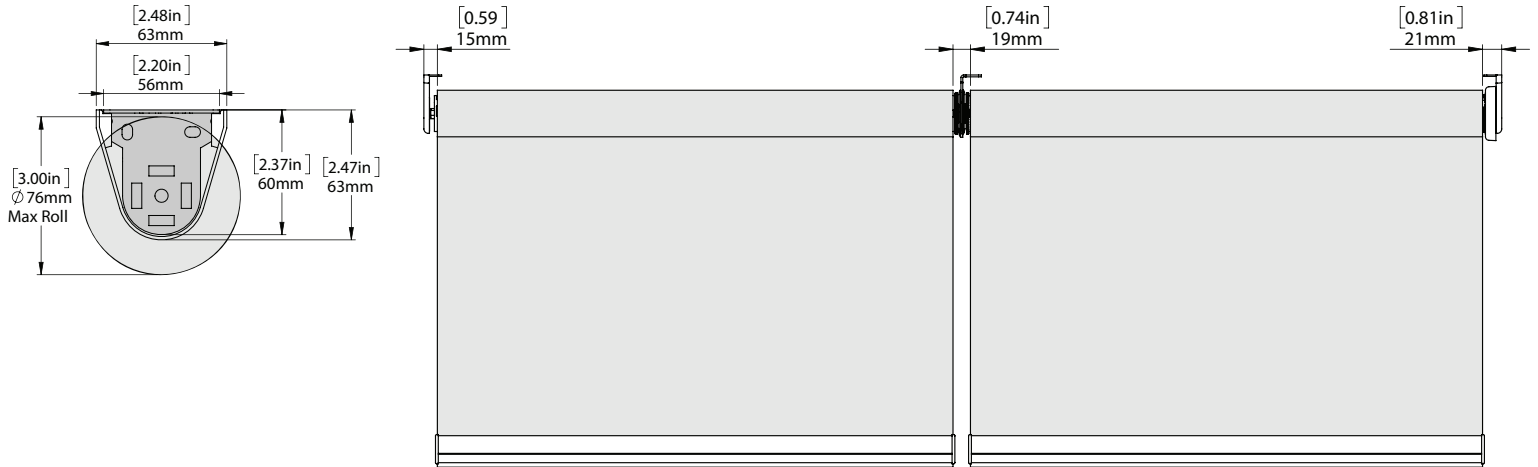
**Automate Sun Sensor**  
[Detects sunlight to control shade]



**DC Power Channel**  
[Provides power for 18 DC ARC motors]

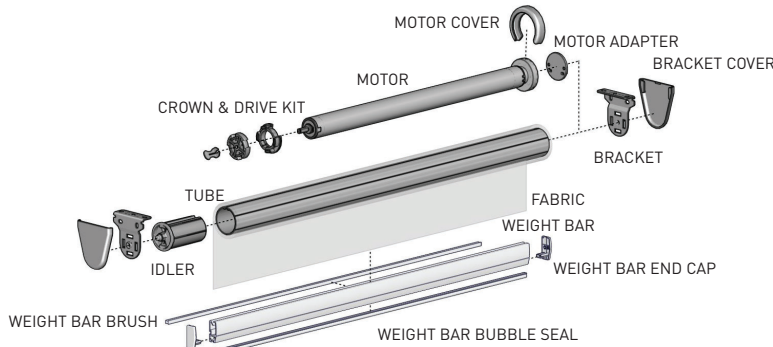


## FRONT & SIDE VIEW



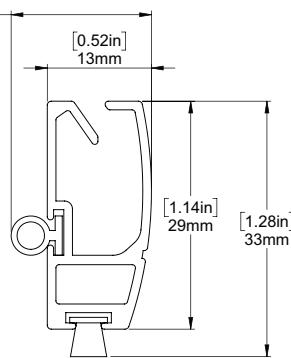
NOTE: LIGHT GAP INCLUDES BRACKET COVERS

## SCHEMATIC

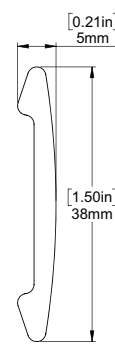


## BOTTOM RAIL OPTIONS

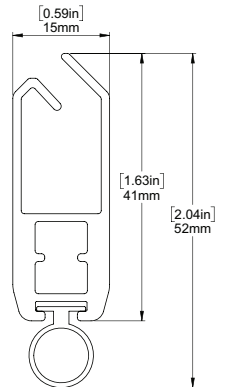
### D30 SILENT WEIGHT BAR



### INTERNAL HEM BAR



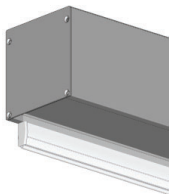
### F4115 HEM BAR



## SYSTEM UPGRADES

### 5" Pocket

[for hidden recess mounts]



### L & I Clips

[for hidden recess mounts]



### Edge Side Channels

[for improved light blackout]



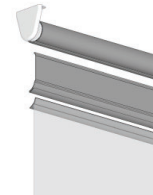
### Internal Wire Guide

[supporting complex shading systems]



### Fabric Switch System

[fast easy changing of fabric on a roller shade]



For more information about our Upgrade solutions, see our UPGRADE SPECIFICATION sheets.