

EASY SPRING ULTRA PRODUCT SPECIFICATIONS



April 2017

CONTENTS

April 2017

SECTION NO.	DESCRIPTION	PAGE NO.
SECTION 1 – OVERVIEW		1.1
	PART A – GENERAL SCHEMATIC	1.1
	PART B – SHADE (BLIND) OPERATION	1.2
	PART C – SYSTEM OPTIONS	1.3
SECTION 2 – SYSTEM SPECIFICATIONS		2.4
	PART A – SYSTEM CAPACITY	2.4
	PART B – SPRING CAPACITY	2.5
	PART C – SYSTEM WEIGHTS	2.9
SECTION 3 – TEST SUMMARY		3.1
SECTION 4 – MATERIAL SPECIFICATIONS		4.1
SECTION 5 – WARRANTY		5.1
SECTION 6 – SPECIFICATION IMAGES		6.1
	PART A – DEDUCTIONS	6.1
	PART B – ROLL DETAILS	6.2

DISCLAIMER

INTRODUCTION

This product specifications manual has been produced by Rollease Acmeda to supply the necessary information for safe and correct assembly and installation of this system.

DISCLAIMER

Rollease Acmeda has used reasonable care in preparing the information included in this document, but makes no representations or warranties as to the completeness or accuracy of the information. Information is supplied upon the condition that the persons receiving the information will make their own determination as to its suitability for their purposes prior to use. Rollease Acmeda assumes no liability whatsoever for any damages incurred by you resulting from errors in or omissions from the information included herein. Rollease Acmeda reserves the right to make changes without further notice to any products to improve reliability, function or design.

COPYRIGHT

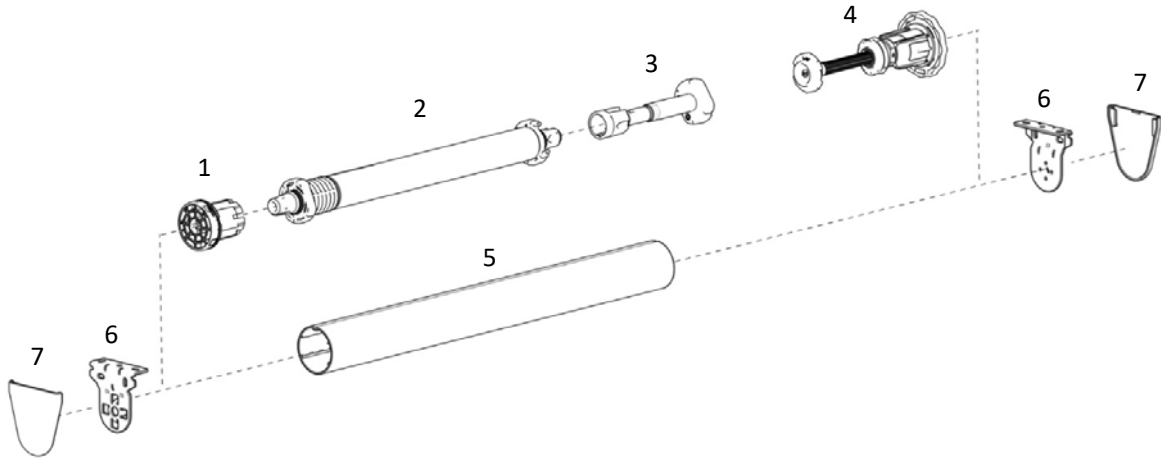
COPYRIGHT © ROLLEASE ACMEDA 2017

All rights reserved. No part of this document may be reproduced or utilized in any means, by any means, electronic or mechanical including photocopying, recordings, or by any information storage or retrieval system, without the express permission from Rollease Acmeda.

SECTION 1 – OVERVIEW

PART A – GENERAL SCHEMATIC

Our innovative Easy Spring Ultra roller system, offers a premium aesthetically pleasing and technologically advanced solution. Controlling the shade (blind)s by independent spring mechanism, raising and lowering shade (blind)s to your preferred location, with one simple touch.



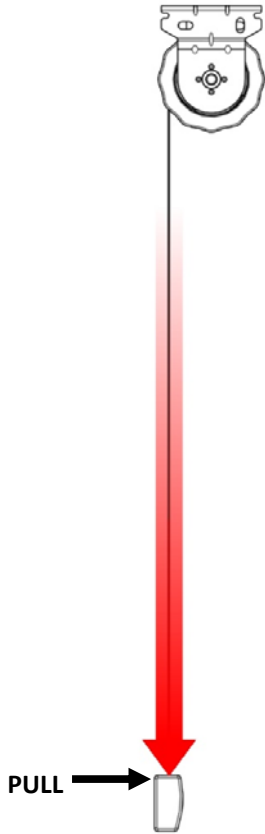
Note: This configuration is primarily shown throughout manuals; Left handed, Back Roll

SYSTEM INDEX

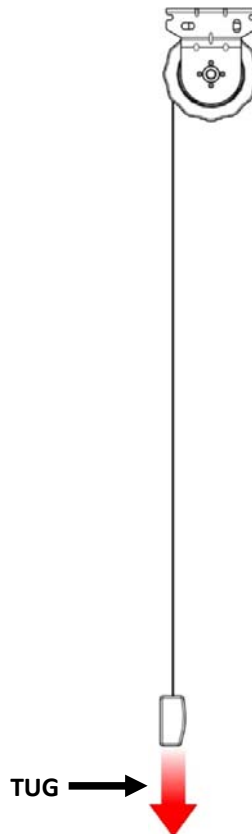
1. Single Spring Control
2. Booster Universal
3. Booster Decelerator
4. Limiter – Single Stop
5. Aluminum Tube
6. Mounting Brackets
7. Bracket Covers

PART B – SHADE (BLIND) OPERATION

DOWN:
PULL Bottom Rail



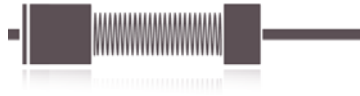
UP:
TUG Bottom Rail
(Shade (blind) will automatically rise)



PART C – SYSTEM OPTIONS

CONTROL OPTIONS

SPRING

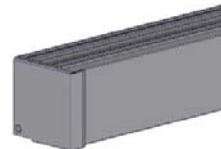


S45 ADD ONS

ROUND CASSETTE



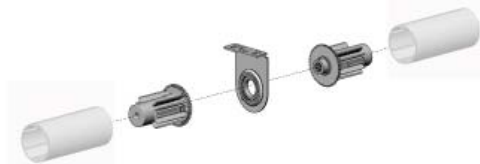
SQUARE CASSETTE



MOUNTING RAIL

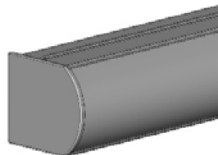


EASY LINK



1.5" (ADD MM) ADD ONS

ROUND CASSETTE



EASY LINK

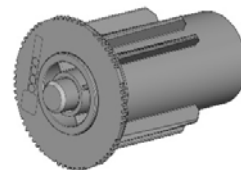


SYSTEM OPTIONS

IDLER PIN



RB09 IDLER



COLOR RANGE



pure white
069



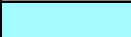



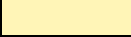

silver grey
338

SECTION 2 – SYSTEM SPECIFICATIONS

PART A – SYSTEM CAPACITY

D30 Medium Weight Bar (No Ballast) | 420 GSM

DROP		WIDTH																	ft	
		2	3	4	5	6	7	8	9	10	11	12	13							
ft	m	0.6	0.8	1.0	1.2	1.4	1.6	1.8	2.0	2.2	2.4	2.6	2.8	3.0	3.2	3.4	3.6	3.8	4.0	m
2	0.5																			
	0.6																			
	0.7																			
3	0.8																			
	0.9																			
	1.0																			
4	1.1																			
	1.2																			
	1.3																			
5	1.4																			
	1.5																			
	1.6																			
6	1.7																			
	1.8																			
	1.9																			
7	2.0																			
	2.1																			
	2.2																			
8	2.3																			
	2.4																			

LEGEND	DESCRIPTION
	1.5" (38mm) & S45 All tubes
	S45 All tubes
	S45 STD + HD
	S45 HD
	Easy-Link
	Cannot be achieved - outside product specifications

PART B – SPRING CAPACITY

1.5" (38mm) TUBE – D30 Medium Weight Bar (No Ballast) | 420 GSM


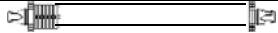



DROP		WIDTH																		
		2	3	4	5	6	7	8	9	10	11	12	13	ft						
ft	m	0.6	0.8	1.0	1.2	1.4	1.6	1.8	2.0	2.2	2.4	2.6	2.8	3.0	3.2	3.4	3.6	3.8	4.0	m
2	0.5																			
	0.6																			
	0.7																			
	0.8																			
3	0.9																			
	1.0																			
	1.1																			
	1.2																			
4	1.3																			
	1.4																			
	1.5																			
	1.6																			
5	1.7																			
	1.8																			
	1.9																			
	2.0																			
6	2.1																			
	2.2																			
	2.3																			
7	2.4																			
	2.5																			
8	2.6																			
	2.7																			

LEGEND	DESCRIPTION
	RB12 Universal Booster - Short
	RB12 Universal Booster - Light
	RB12 Universal Booster - Standard
	RB12 Universal Booster - Standard with Easy Link/ Infinite link
	Cannot be achieved - outside product specifications

NOTE: The above charts are indicative only. Due to variances in fabric weights, weight bar weights, addition of ballast and friction the optimum booster will vary shade (blind) too shade (blind).

S45 LT TUBE – D30 Medium Weight Bar (No Ballast) | 420 GSM


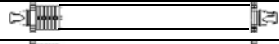



DROP		WIDTH																	ft	
ft	m	0.6	0.8	1.0	1.2	1.4	1.6	1.8	2.0	2.2	2.4	2.6	2.8	3.0	3.2	3.4	3.6	3.8	4.0	m
2	0.5																			
	0.6																			
	0.7																			
	0.8																			
3	0.9																			
	1.0																			
	1.1																			
4	1.2																			
	1.3																			
	1.4																			
5	1.5																			
	1.6																			
	1.7																			
6	1.8																			
	1.9																			
	2.0																			
7	2.1																			
	2.2																			
	2.3																			
8	2.4																			

LEGEND	DESCRIPTION	COLOR
	RB12 Universal Booster - Short	
	RB12 Universal Booster - Light	
	RB12 Universal Booster - Standard	
	RB12 Universal Booster - Standard with Easy Link	
	RB12 Universal Booster - Heavy Duty with Easy Link	
	Cannot be achieved - outside product specifications	-

NOTE: The above charts are indicative only. Due to variances in fabric weights, weight bar weights, addition of ballast and friction the optimum booster will vary shade (blind) too shade (blind).

S45 STD TUBE – D30 Medium Weight Bar (No Ballast) | 420 GSM


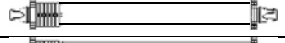



DROP		WIDTH																		
		2	3	4	5	6	7	8	9	10	11	12	13	ft						
ft	m	0.6	0.8	1.0	1.2	1.4	1.6	1.8	2.0	2.2	2.4	2.6	2.8	3.0	3.2	3.4	3.6	3.8	4.0	m
2	0.5																			
	0.6																			
	0.7																			
	0.8																			
3	0.9																			
	1.0																			
	1.1																			
4	1.2																			
	1.3																			
	1.4																			
5	1.5																			
	1.6																			
	1.7																			
6	1.8																			
	1.9																			
	2.0																			
7	2.1																			
	2.2																			
	2.3																			
8	2.4																			

LEGEND	DESCRIPTION	COLOR
	RB12 Universal Booster - Short	
	RB12 Universal Booster - Light	
	RB12 Universal Booster - Standard	
	RB12 Universal Booster - Standard with Easy Link	
	RB12 Universal Booster - Heavy Duty with Easy Link	
	Cannot be achieved - outside product specifications	-

NOTE: The above charts are indicative only. Due to variances in fabric weights, weight bar weights, addition of ballast and friction the optimum booster will vary shade (blind) too shade (blind).

S45 HD TUBE – D30 Medium Weight Bar (No Ballast) | 420 GSM

DROP		WIDTH																		
		2	3	4	5	6	7	8	9	10	11	12	13	ft						
ft	m	0.6	0.8	1.0	1.2	1.4	1.6	1.8	2.0	2.2	2.4	2.6	2.8	3.0	3.2	3.4	3.6	3.8	4.0	m
2	0.5																			
	0.6																			
	0.7																			
3	0.8																			
	0.9																			
	1.0																			
4	1.1																			
	1.2																			
	1.3																			
5	1.4																			
	1.5																			
	1.6																			
6	1.7																			
	1.8																			
	1.9																			
7	2.0																			
	2.1																			
	2.2																			
8	2.3																			
	2.4																			

LEGEND	DESCRIPTION	COLOR
	RB12 Universal Booster - Short	
	RB12 Universal Booster - Light	
	RB12 Universal Booster - Standard	
	RB12 Universal Booster - Heavy Duty	
	RB12 Universal Booster - Heavy Duty with Easy Link	
	Cannot be achieved - outside product specifications	-

NOTE: The above charts are indicative only. Due to variances in fabric weights, weight bar weights, addition of ballast and friction the optimum booster will vary shade (blind) too shade (blind).

PART C – SYSTEM WEIGHTS

SYSTEM – Open Shade (Blind), S45 STD Tube, D30 Weight Bar (No Ballast)

DROP		WIDTH																	ft	
ft	m	0.6	0.8	1.0	1.2	1.4	1.6	1.8	2.0	2.2	2.4	2.6	2.8	3.0	3.2	3.4	3.6	3.8	4.0	m
2	0.5		1.7 (3.7)	1.9 (4.2)	2.2 (4.7)	2.4 (5.2)	2.6 (5.7)	2.9 (6.2)	3.1 (6.8)	3.3 (7.3)	3.6 (7.8)	3.8 (8.3)	4 (8.8)	4.3 (9.3)	4.5 (9.9)	4.7 (10.4)	5 (10.9)	5.2 (11.4)	5.4 (11.9)	
	0.6		1.7 (3.7)	2 (4.3)	2.2 (4.8)	2.4 (5.3)	2.7 (5.9)	2.9 (6.4)	3.2 (6.9)	3.4 (7.5)	3.7 (8)	3.9 (8.5)	4.1 (9.1)	4.4 (9.6)	4.6 (10.1)	4.9 (10.7)	5 (10.9)	5.4 (11.8)	5.6 (12.3)	
	0.7		1.7 (3.8)	2 (4.3)	2.3 (4.9)	2.5 (5.5)	2.8 (6)	3 (6.6)	3.3 (7.1)	3.5 (7.7)	3.8 (8.2)	4 (8.8)	4.3 (9.3)	4.5 (9.9)	4.8 (10.4)	5 (11)	5 (10.9)	5.5 (12.1)		
	0.8		1.8 (3.9)	2 (4.4)	2.3 (5)	2.6 (5.6)	2.8 (6.2)	3.1 (6.7)	3.3 (7.3)	3.6 (7.9)	3.9 (8.4)	4.1 (9)	4.4 (9.6)	4.6 (10.2)	4.9 (10.7)	5.2 (11.3)	5 (10.9)	5.7 (12.5)		
3	0.9		1.8 (3.9)	2.1 (4.5)	2.3 (5.1)	2.6 (5.7)	2.9 (6.3)	3.2 (6.9)	3.4 (7.5)	3.7 (8.1)	4 (8.7)	4.2 (9.3)	4.5 (9.8)	4.8 (10.4)	5 (11)	5.3 (11.6)	5 (10.9)	5.8 (12.8)		
	1.0		1.8 (4)	2.1 (4.6)	2.4 (5.2)	2.7 (5.8)	3 (6.4)	3.2 (7.1)	3.5 (7.7)	3.8 (8.3)	4.1 (8.9)	4.3 (9.5)	4.6 (10.1)	4.9 (10.7)	5.2 (11.3)	5.4 (11.9)	5 (10.9)	6 (13.2)		
	1.1		1.9 (4.1)	2.2 (4.7)	2.4 (5.3)	2.7 (6)	3 (6.6)	3.3 (7.2)	3.6 (7.8)	3.9 (8.5)	4.2 (9.1)	4.4 (9.7)	4.7 (10.4)	5 (11)	5.3 (11.6)	5.6 (12.2)	5 (10.9)	6.2 (13.5)		
4	1.2		1.9 (4.1)	2.2 (4.8)	2.5 (5.4)	2.8 (6.1)	3.1 (6.7)	3.4 (7.4)	3.7 (8)	4 (8.7)	4.3 (9.3)	4.6 (10)	4.8 (10.6)	5.1 (11.3)	5.4 (11.9)	5.7 (12.6)	5 (10.9)			
	1.3		1.9 (4.2)	2.2 (4.9)	2.5 (5.5)	2.8 (6.2)	3.1 (6.9)	3.5 (7.5)	3.8 (8.2)	4.1 (8.9)	4.4 (9.5)	4.7 (10.2)	5 (10.9)	5.3 (11.5)	5.6 (12.2)	5.9 (12.9)				
	1.4		2 (4.3)	2.3 (5)	2.6 (5.7)	2.9 (6.3)	3.2 (7)	3.5 (7.7)	3.8 (8.4)	4.1 (9.1)	4.5 (9.8)	4.8 (10.4)	5.1 (11.1)	5.4 (11.8)	5.7 (12.5)					
	1.5		2 (4.4)	2.3 (5.1)	2.6 (5.8)	3 (6.5)	3.3 (7.2)	3.6 (7.9)	3.9 (8.6)	4.2 (9.3)	4.6 (10)	4.9 (10.7)	5.2 (11.4)	5.5 (12.1)						
5	1.6		2 (4.4)	2.4 (5.2)	2.7 (5.9)	3 (6.6)	3.3 (7.3)	3.7 (8)	4 (8.8)	4.3 (9.5)	4.7 (10.2)	5 (10.9)	5.3 (11.6)	5.6 (12.4)						
	1.7		2.1 (4.5)	2.4 (5.2)	2.7 (6)	3.1 (6.7)	3.4 (7.5)	3.7 (8.2)	4.1 (8.9)	4.4 (9.7)	4.8 (10.4)	5.1 (11.2)	5.4 (11.9)							
	1.8		2.1 (4.6)	2.4 (5.3)	2.8 (6.1)	3.1 (6.8)	3.5 (7.6)	3.8 (8.4)	4.2 (9.1)	4.5 (9.9)	4.9 (10.6)	5.2 (11.4)	5.5 (12.2)							
	1.9		2.1 (4.6)	2.5 (5.4)	2.8 (6.2)	3.2 (7)	3.5 (7.7)	3.9 (8.5)	4.2 (9.3)	4.6 (10.1)	5 (10.9)	5.3 (11.6)								
	2.0		2.2 (4.7)	2.5 (5.5)	2.9 (6.3)	3.2 (7.1)	3.6 (7.9)	4 (8.7)	4.3 (9.5)	4.7 (10.3)	5.1 (11.1)	5.4 (11.9)								
6	2.1		2.2 (4.8)	2.6 (5.6)	2.9 (6.4)	3.3 (7.2)	3.7 (8)	4 (8.9)	4.4 (9.7)	4.8 (10.5)	5.2 (11.3)									
	2.2		2.2 (4.9)	2.6 (5.7)	3 (6.5)	3.4 (7.4)	3.7 (8.2)	4.1 (9)	4.5 (9.8)	4.9 (10.7)	5.3 (11.5)									
	2.3			2.6 (5.8)	3 (6.6)	3.4 (7.5)	3.8 (8.3)	4.2 (9.2)	4.6 (10)	5 (10.9)	5.3 (11.7)									
7	2.4			2.7 (5.9)	3.1 (6.7)	3.5 (7.6)	3.9 (8.5)	4.3 (9.3)	4.7 (10.2)	5.1 (11.1)	5.4 (11.9)									

	Cannot be achieved - outside product specifications
## (##)	System Weight kg (lbs)

SECTION 3 – TEST SUMMARY

TEST – CYCLE

TEST DESCRIPTION:	BOOSTER UNIVERSAL	TEST REPORT NUMBER:	TR-2015028
CONTROL:	Spring	TORQUE:	SHORT 0.46 Nm (0.34 ft. Lbs) LIGHT 0.60 Nm (0.44 ft. Lbs) STD 1.09 Nm (0.80 ft. Lbs) HD 1.77 Nm (1.30 ft. Lbs)
CYCLES PASSED:	6,000		

TEST DESCRIPTION:	PRETENSION	TEST REPORT NUMBER:	TR-2015011
CONTROL:	Spring	Pretension adjustment:	Every 1,000 cycles
CYCLES PASSED:	10,000	TORQUE:	2.4 Nm (1.77 ft. Lbs)

TEST DESCRIPTION:	POSITION STOP	TEST REPORT NUMBER:	TR-2015016
CONTROL:	NA	Stop positions:	6
CYCLES PASSED:	10,000	TORQUE:	1.5 Nm (1.1 ft. Lbs)

TEST DESCRIPTION:	UNIVERSAL LIMITER	TEST REPORT NUMBER:	TR-2017003
CONTROL:	LH Top Stop	TORQUE:	2.8 Nm (2.1 ft. Lbs)
CYCLES PASSED:	5,500		

TEST DESCRIPTION:	UNIVERSAL LIMITER	TEST REPORT NUMBER:	TR-2017003
CONTROL:	RH Top Stop	TORQUE:	2.8 Nm (2.1 ft. Lbs)
CYCLES PASSED:	7000		

SECTION 4 – MATERIAL SPECIFICATIONS

PART NUMBER	PRODUCT	MATERIAL	METAL FINISHES
RB12-3200-XXXXXX	SPRING CONTROL	POM, ABS/PC	
RB12-450X-XXXXXX	BOOSTER UNIVERSAL	ABS/PC, POM, NYLON, SPRING STEEL, MILD STEEL	
RB12-710X-XXXXXX	SOFT LIFT DECELERATOR	NYLON, POM, TPV	
RB12-2503-XXX040	SINGLE STOP LIMITER LX BRACKET SET	MILD STEEL	
RB12-6000-XXXXXX	LIMITER – SINGLE STOP UNIVERSAL	NYLON GF, POM, SPRING STEEL, MILD STEEL	
RB08-4151-XXX040	VX/LX BRACKET COVER CAPS S40/45	ASA	
RB93-X443-000580	T-SPLINE ALUMINUM TUBE - S45 LIGHT	ALUMINUM	MILL / ANOD (10µM)
RB93-X444-000580	T-SPLINE ALUMINUM TUBE - S45 STANDARD	ALUMINUM	MILL / ANOD (10µM)
RB93-X449-000580	T-SPLINE ALUMINUM TUBE - S45 HEAVY DUTY	ALUMINUM	MILL / ANOD (10µM)
RB92-0404-311215	T-SPLINE - SLIDE-ON	PVC	
HD31-0401-001XXX	MULTI-PURPOSE DOUBLE SIDED TAPE	-	
RB09-0352-XXXXXX	EASY-LOCK LX INSTALLATION BRACKET S45	MILD STEEL	
RB88-2051-XXX480	MKII MOUNTING RAIL BASE 50 VX/LX	ALUMINUM	MILL / ANOD (10µM) / PC
RB88-2092-XXX001	SLIMLINE SPRING CLIP BRACKET	SPRING STEEL	
RB88-4141-XXX030	VX/LX BRACKET COVER CAPS – M/RAIL BASE 40 S45	ASA	
HD82-1904-025010	SELF TAPPING SCREWS PHILIPS COUNTER SUNK HEAD	ALLOY STEEL	
RB09-0245-XXX001	RB09 EASY-LOCK EXTENDABLE IDLER S45	POM, NYLON, SPRING STEEL	
RB12-2501-XXX038	SINGLE STOP LIMITER 1.5" BRACKET SET	MILD STEEL	
RB12-2502-XXX038	BRACKET SINGLE STOP LIMITER 1.5" CASSETTE BRACKET SET	MILD STEEL	
SLBCW	STANDARD BRACKET COVER 1.5" XX	ABS	
RTEA-4T05-XXX580/RTEA-4TXX	1.5" TUBE + M/P TAPE	ALUMINUM	
SLPEV653W	SKYLINE PIN END 1.5"	SPRING STEEL, NYLON, HIPS	
SLPEHD53W	SKYLINE PIN END HEAVY DUTY 1.5"	NYLON GF, SPRING STEEL	

SECTION 5 – WARRANTY

Rollease Acmeda provide a limited lifetime hardware warranty against defects to the original purchaser (the fabricator/manufacturer).

The hardware warranty is not to be transferred to the end consumer.

The hardware warranty is limited to the repair or resupply of defective hardware components to the fabricator/manufacturer only.

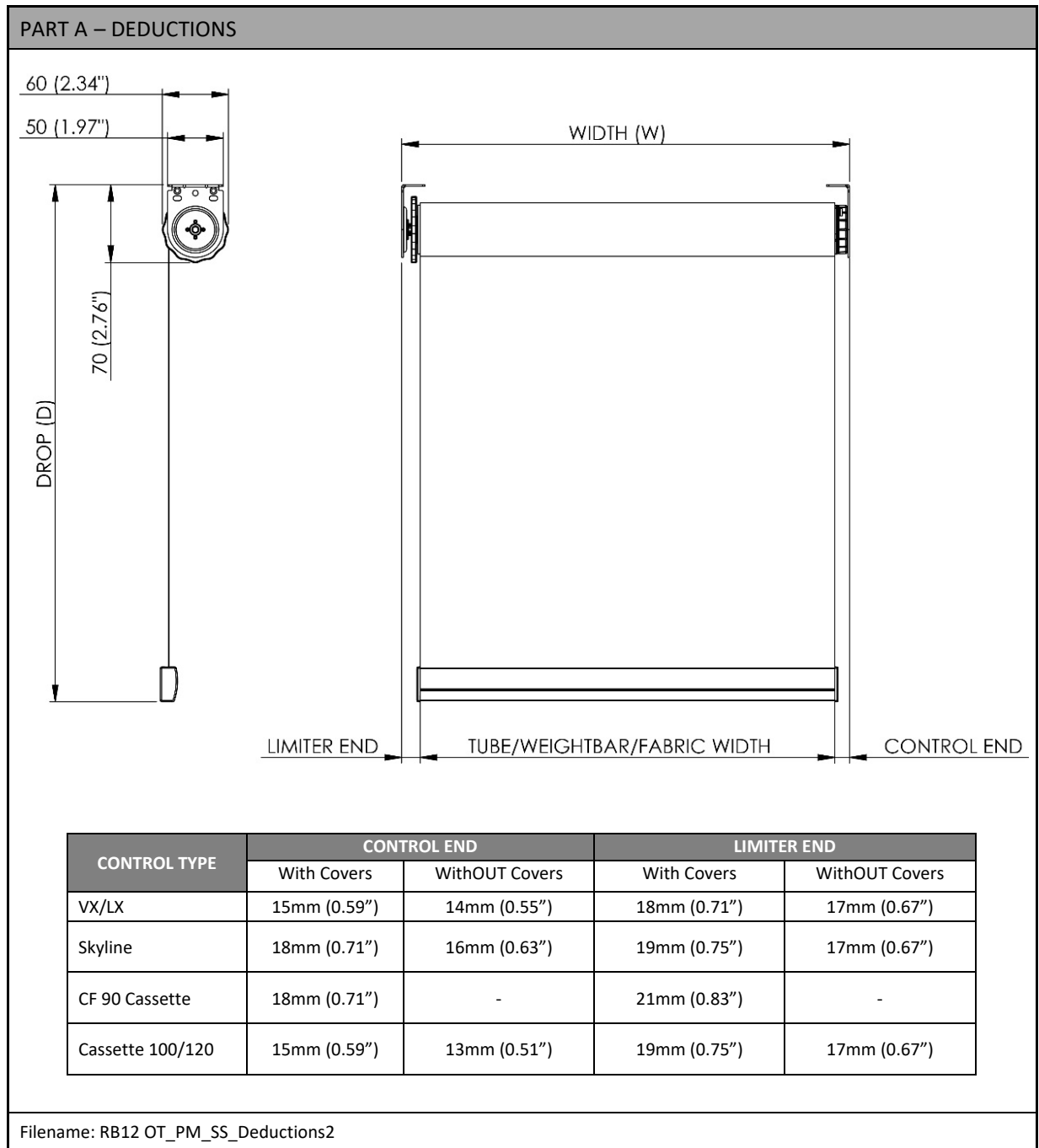
The hardware warranty is applicable to normal use.

The hardware warranty will not apply where the defect arises due to incorrect assembly and installation.

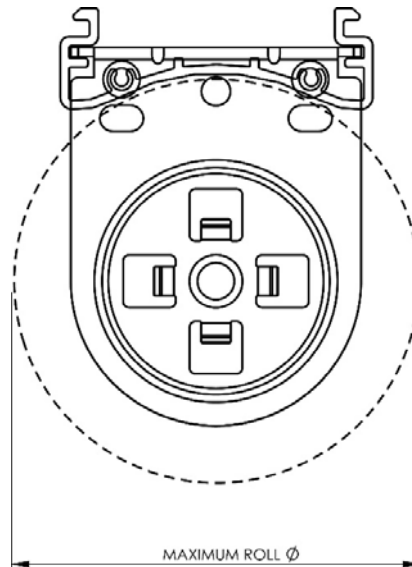
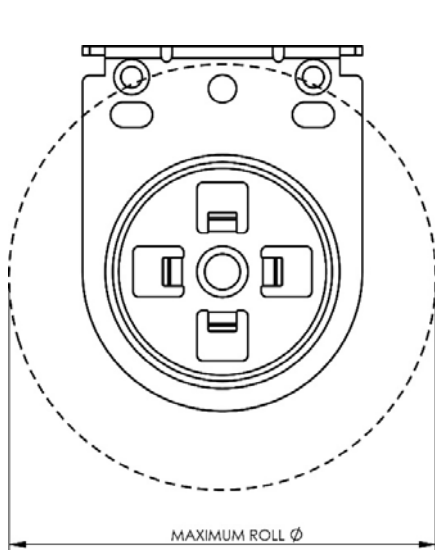
Retailers are obliged to supply consumers with their own warranty, if required, at the point of purchase.

SECTION 6 – SPECIFICATION IMAGES

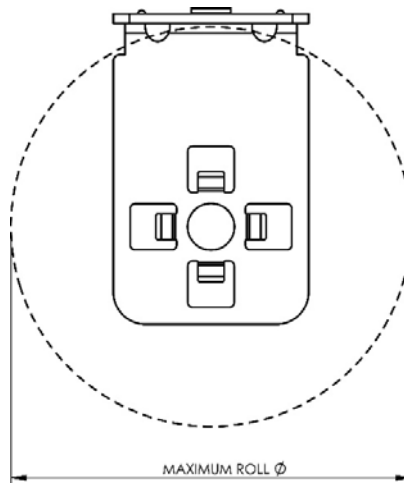
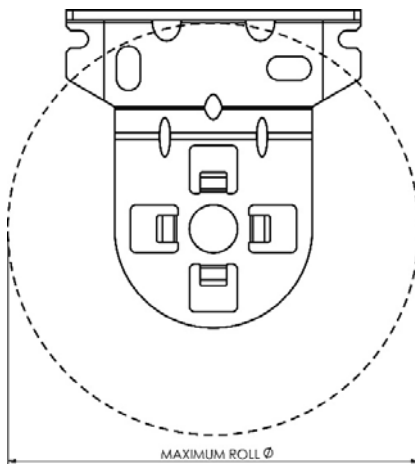
Please contact Rollease Acmeda: marketing@rolleaseacmeda.com to request electronic copies of the file listed below.



PART B – ROLL DETAILS



MAXIMUM ROLL SIZE CHART		
VX/LX withOUT Mounting Rail	78mm	3.071"
VX/LX with Mounting Rail	72mm	2.835"



MAXIMUM ROLL SIZE CHART		
1.5" (add mm)	78mm	3.071"