

# MESA

COMMERCIAL LIGHT FILTERING & BLACKOUT



TEXSTYLE



## Mesa

Mesa Light Filtering and Blackout fabrics offer the perfect PVC Free high quality solution for any commercial or residential space.

Mesa Light Filtering is the newest addition to the Mesa collection with 5 neutral colors that match directly to it's Blackout counterpart. Mesa Light Filtering lets light into the room but still maintains privacy.

Mesa Blackout has now expanded to 14 modern and attractive colors. All colors come with a uniform white back with the exception of Tuxedo which is the popular Dove White front with a Charcoal Gray back. Use Mesa blackout when you are looking for total light blockage.

## FEATURES

- Flame Retardant
- PVC-free
- New modern color palette consisting of 14 Blackout colors and 5 coordinating light filtering colors
- A new blackout with white front and a charcoal back which helps the shade be less noticeable in the window
- Attractive textile appearance
- Available in wide width of 118"
- Now with more blackout colors to match our 3000 NET offering.

Bringing Fabrics to Life

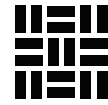
USA | AUSTRALIA | EUROPE [texstyle.com](http://texstyle.com)

A DIVISION OF  
**ROLLEASE  
ACMEDA**

©2020 Texstyle

# MESA

COMMERCIAL LIGHT FILTERING & BLACKOUT

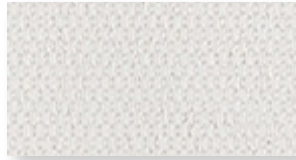


TEXSTYLE

## COLORS | LIGHT FILTERING



Dove White



Ice Gray



Quill

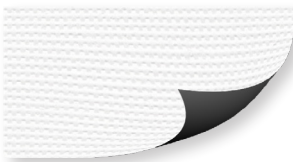


Nougat



Moonstone

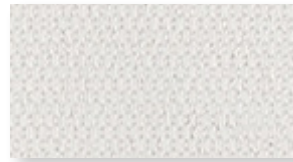
## COLORS | BLACKOUT



Tuxedo  
*(Dove White front,  
Charcoal back)*



Dove White



Ice Gray



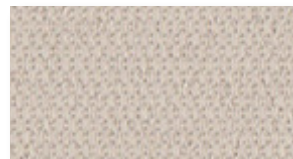
Quill



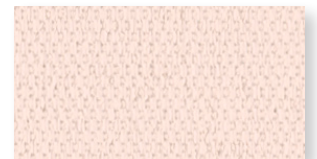
Seal



Dune



Nougat



Pearl



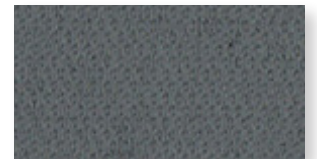
White



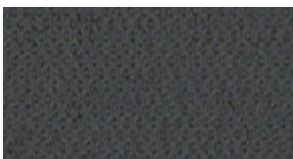
Moonstone



Mist



Slate



Storm



Black

Bringing Fabrics to Life

USA | AUSTRALIA | EUROPE [textstyle.com](http://textstyle.com)

A DIVISION OF  
**ROLLEASE  
ACMEDA**

©2020 Textstyle



### SPECIFICATIONS

### ACOUSTICAL PERFORMANCE

	Light Filtering	Blackout	MESA	NRC RATING*	SAA RATING*
Composition	100% Polyester	100% Polyester with Acrylic Backing	Blackout	0.05	0.06
Weight	6.93 oz/yd <sup>2</sup> (235g/m <sup>2</sup> )	12.68 oz/yd <sup>2</sup> (430 g/m <sup>2</sup> )	*Noise Reduction Coefficient (NRC) and Sound Absorption Average (SAA) tested to ASTM C423-17		
Thickness	0.019in (.48mm)	0.022in (.55mm)			
Light Fastness	≥ 6 (Blue wool scale)				
Average length	27yd/roll (25m)				
Width	118" (3m)				
Cutting	Cold, Crush, Ultrasonic				
Welding	Tape Recommended. 330-360°F. Test welding parameters in advance.				
Railroadable	No				
Cleaning	Wipe clean with warm soapy water and damp cloth.				
Environmental Standards	Greenguard Gold or Low VOC < 0.5mg/m <sup>3</sup> : CDPH Standard Method v1.1-2010, Health Product Declaration, Oeko-Tex Standard 100				
Fire Classifications	NFPA 701, CA Title 19				

### THERMAL AND OPTICAL FACTORS

COLOR	THERMAL FACTORS					OPTICAL FACTORS	
	Ts	Rs	As	Single Glass Reference Glazing A [g window 0.85] [U window 5.7] G-total	High Performance Glass Reference Glazing D [g window 0.32] [U window 1.1] G-total	Tv	Tuv
Blackout	0	71	29	0.30	0.24	0	0
Dove/White LF	39	58	3	0.43	0.26	40	13
Ice Gray LF	38	59	3	0.42	0.26	39	12
Moonstone LF	32	48	20	0.48	0.27	31	10
Nougat LF	32	49	19	0.47	0.27	31	10
Quill LF	31	46	23	0.49	0.27	29	10

\*Ts, Rs, As, Tv, and TUV tested to DIN EN 410: 2011. G-total tested to EN 14501



LOW VOC



HEALTH PRODUCT DECLARATION



Tested for harmful substances.



9001



10 YEAR WARRANTY



FR



PVC FREE



LEAD FREE



FORMALDEHYDE FREE



PHTHALATE FREE



FRAGRANCE FREE



ENERGY SAVING



PRINTABLE