

# AUTOMATE®

## 5V Li-ion Zero 2.0Nm Quiet Motor

The rechargeable, battery-powered motor for small to medium shades in residential and small commercial projects.



### Patented Motor Head Design

Offers the smallest light-gap and antenna cable can be concealed within the motor head.



### Innovative Motor Cap

Optional, custom-designed accessory for no visible wires.



### Quiet Operation

Superior acoustic performance makes this the quietest motor yet.



### Elegant Soft Stop

Slows the motor down for a smooth stop to prevent damage to the shade, and preserves the life of the battery.



### Battery Check Action

When paired with Push5 remote, motor will move shade to indicate battery percentage.



### Micro USB Charging

Custom motor charger not required. Utilize any micro USB cable and charger to renew battery.



### Secure Hold

Motor head design accommodates bracket with a 12mm tongue for a more secure fit.



### Simplified RetroFit

Upgrade manual or motorized shade systems seamlessly to maintain existing deductions, achieve minimal light gap, and eliminate bracket adjustments.



Quiet

5 YEAR WARRANTY

ARC

ARC™ (Automate Radio Communication) is Rollease Acmeda's proprietary technology utilizing 433MHz radio communication with bi-directional feedback that brings Automate motorized shading systems together.

A Division of Rollease Acmeda

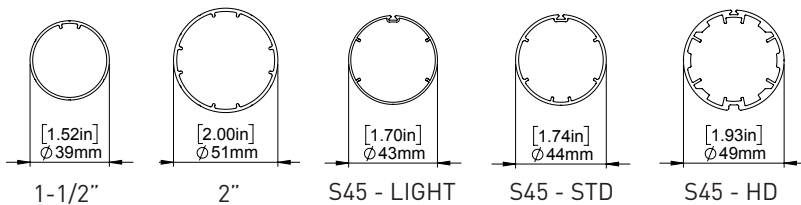
# Product Specifications

Part #: MT01-1328-069008-CT 5V ZERO LI-ION 2.0NM CT15 Q MOTOR [Ø28/5V/28RPM](SKY)

<b>Voltage</b>	5V-DC	<b>Limit Switch Type</b>	Electronic
<b>Torque</b>	2.0Nm	<b>Current</b>	1.25A
<b>Max Run Time</b>	12 min.	<b>Battery Size/Type</b>	2600mAH
<b>Speed</b>	28 RPM (Adjustable to 20 or 24)	<b>Temp Working Range</b>	32°F to 140°F (0°C to 60°C)
<b>Radio Frequency</b>	433.92 MHz	<b>Insulation Class</b>	III
<b>RF Modulation</b>	FSK	<b>Sound Level</b>	~30 dB
<b>IP Rating</b>	IP20	<b>Power</b>	15 W

## Dimensions

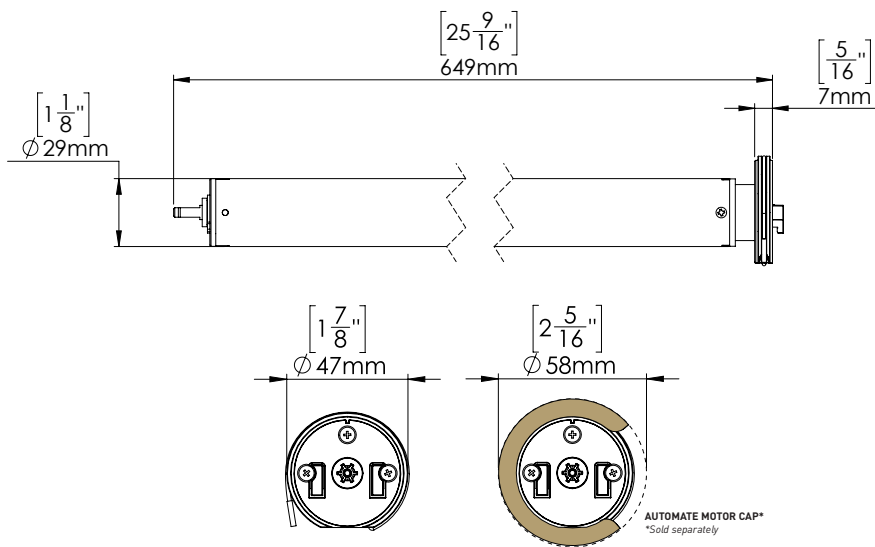
### Compatible Tubes



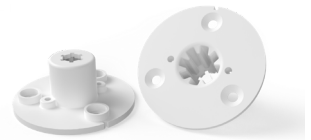
### Applications

- Roller Shades
- Roman Shades

### Dimensions



### MOTOR HEAD ADAPTORS



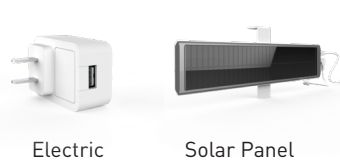
- MT03-0205-069001
- MT03-0205-069002
- MT03-0206-069002

## Compatible Products (refer to catalog for full item listings)

### Controllers



### Charging Options



### Motor Cap



### Sensors

